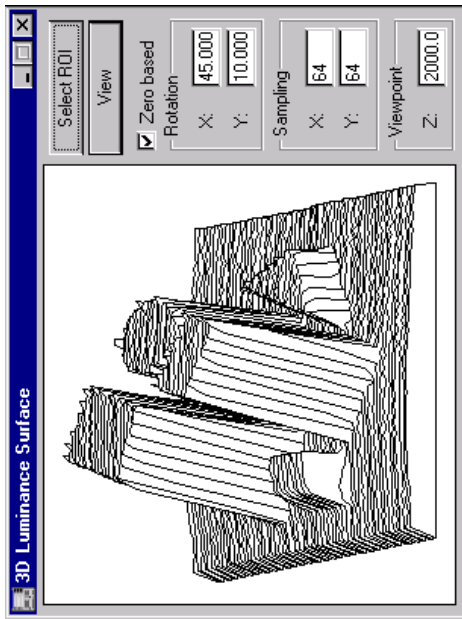


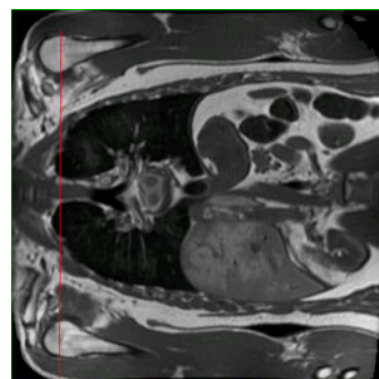
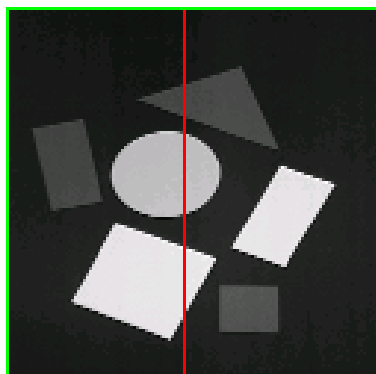
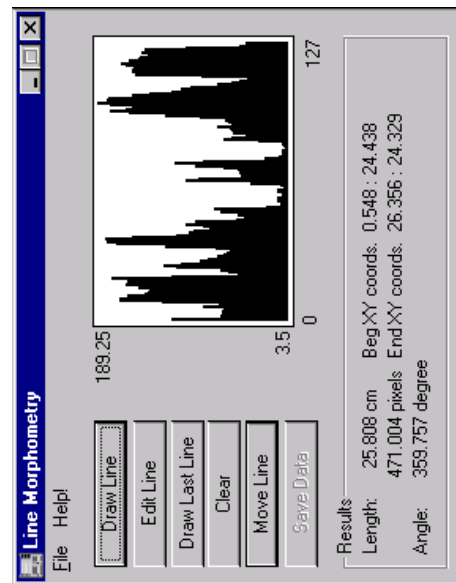
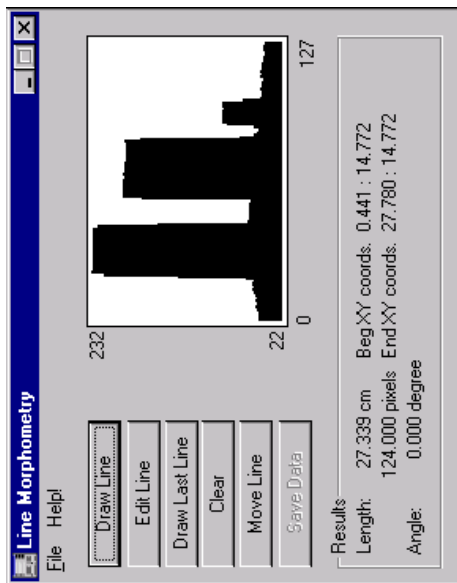


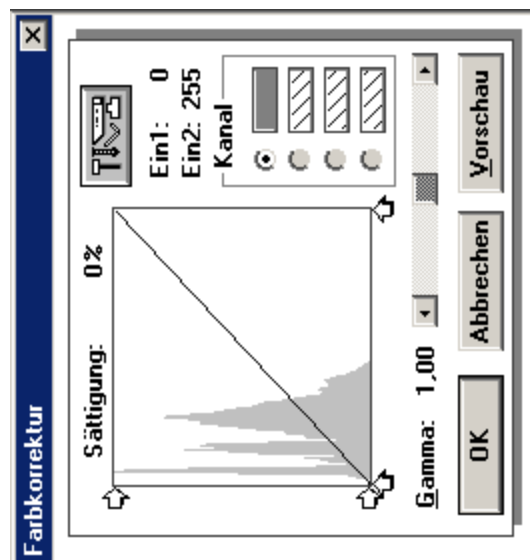
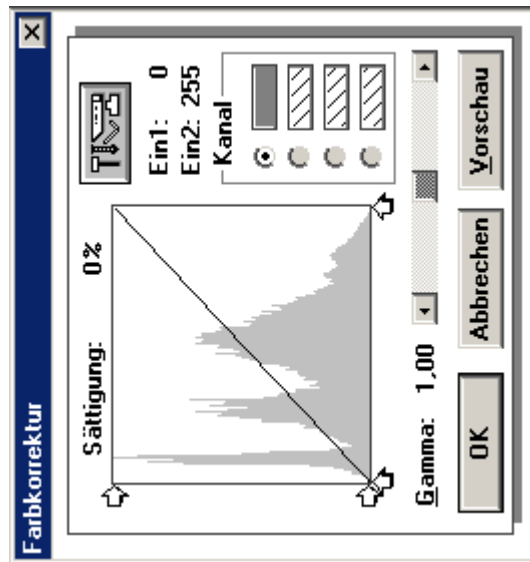
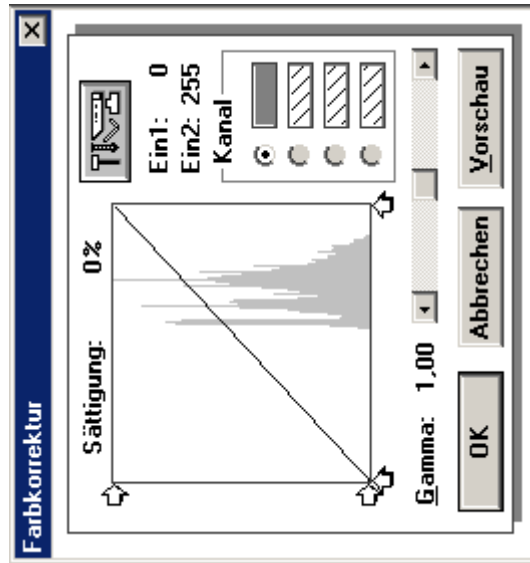
## Digitale Bildverarbeitung

1. Einführung
2. Digitalisierung
3. Technische Komponenten
4. Grauwertstatistik
5. Punktoperatoren
6. Lokale Operatoren
7. Globale Operatoren
8. Merkmalsextraktion
9. Klassifikation
10. Codierung

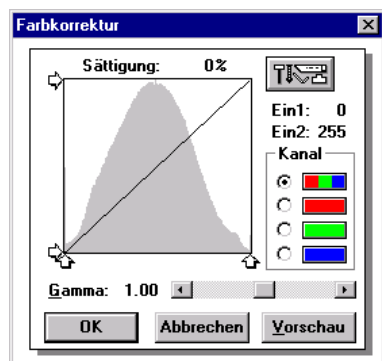
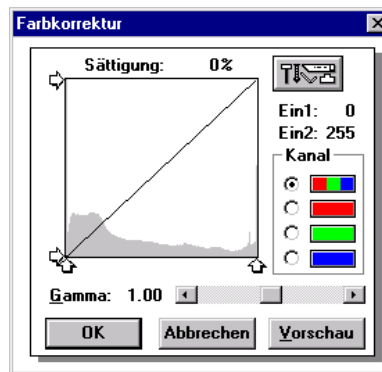
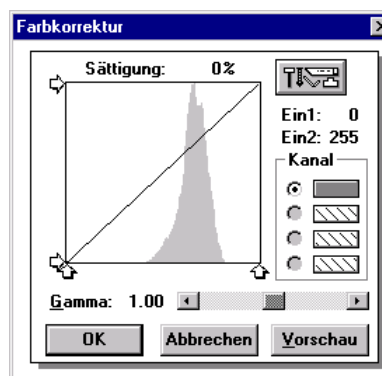
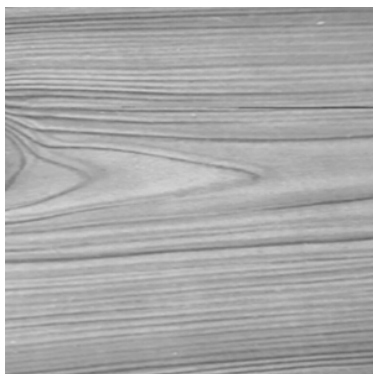
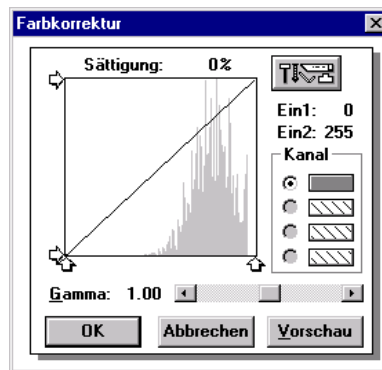


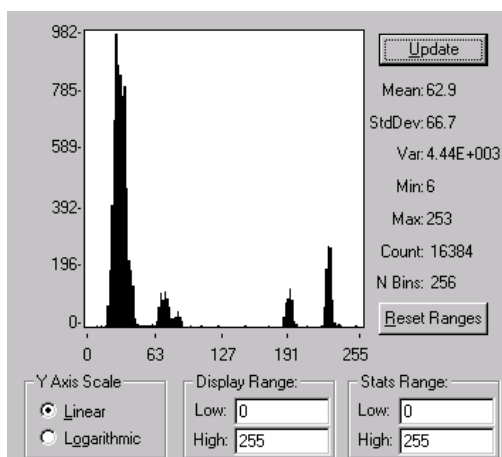
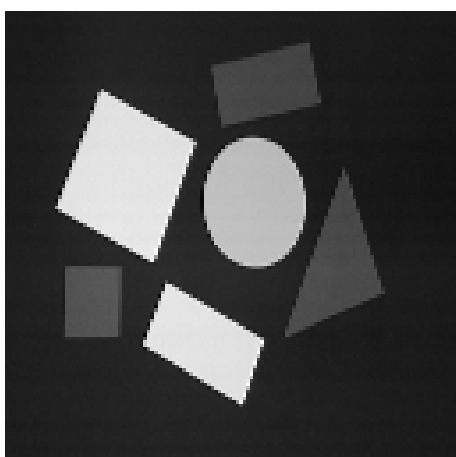
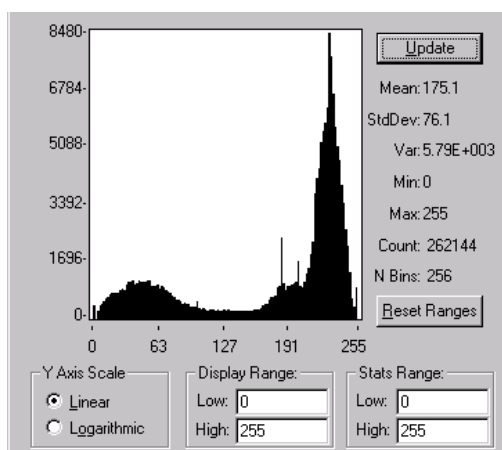
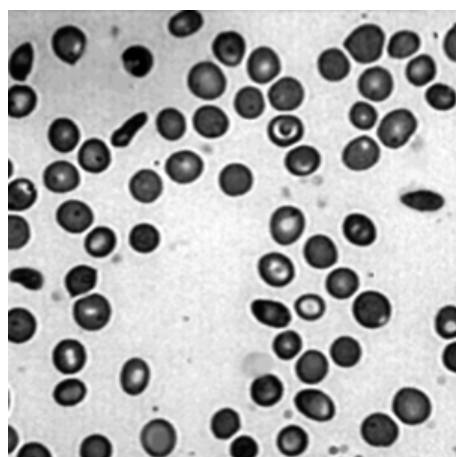
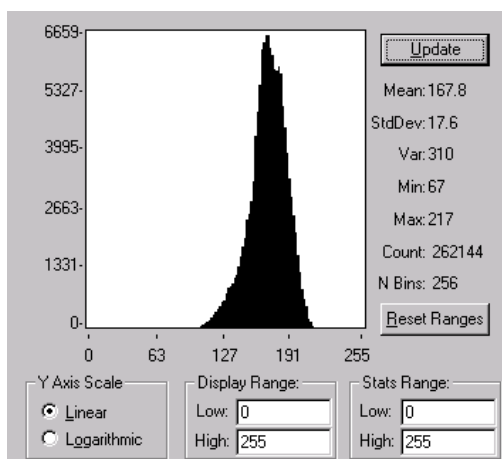
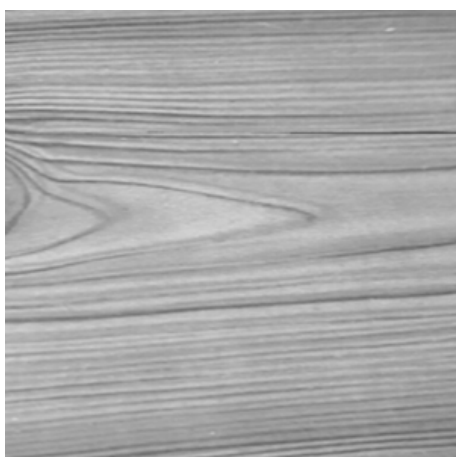
Grauwertprofile,  
Grauwertstatistik



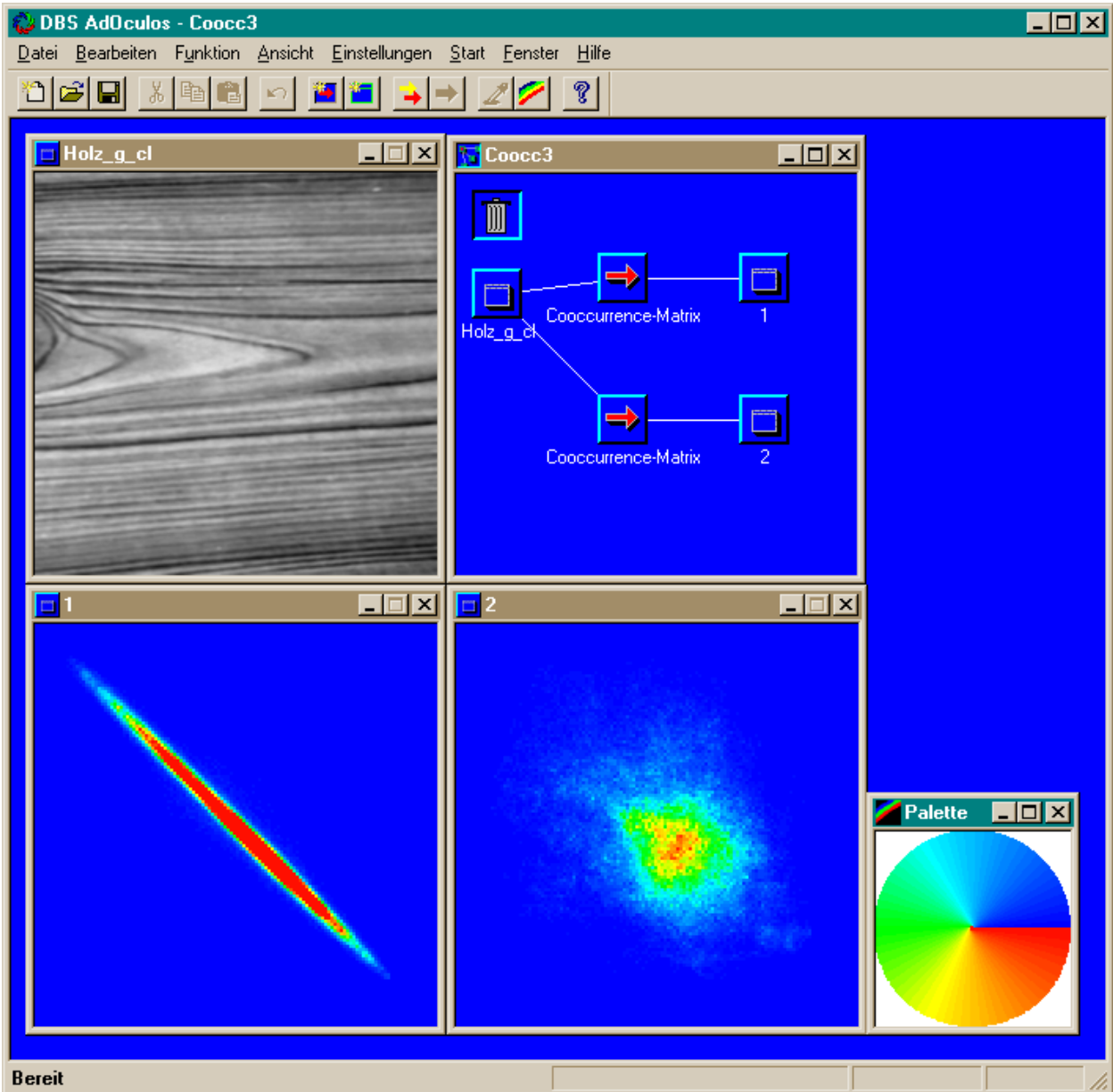


Grauwert-Histogramme



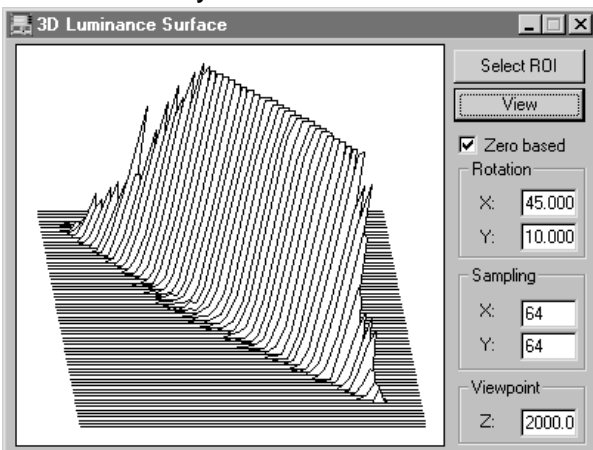


**Histogramm:**  
monomodal, bimodal, multimodal

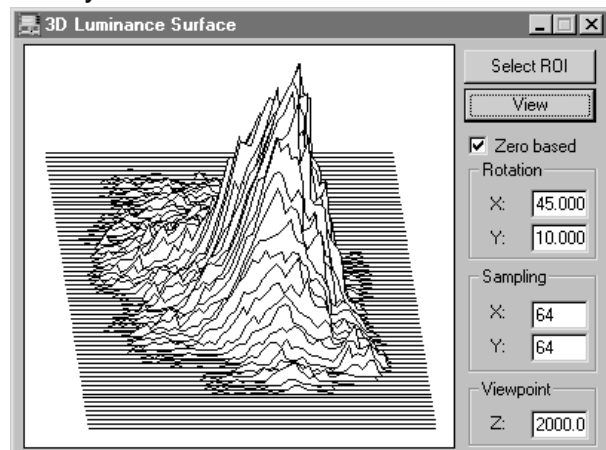


Relation p:  $\Delta x=1$   
 $\Delta y=0$

Relation p:  $\Delta x=0$   
 $\Delta y=1$

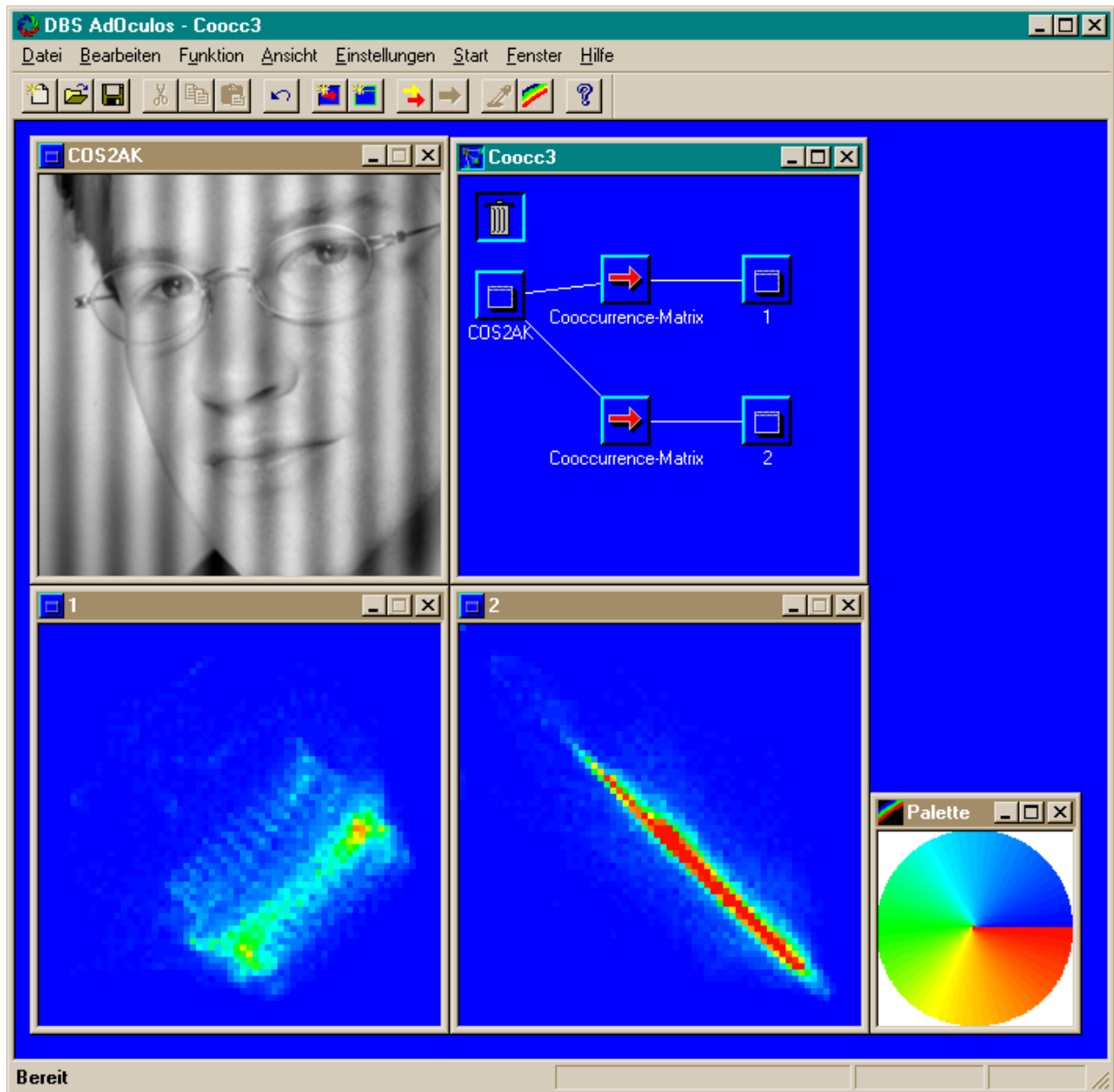


rechter Nachbar



unterer Nachbar

### Cooccurrence-Matrix



Relation p:  $\Delta x=1$   
 $\Delta y=0$

Relation p:  $\Delta x=0$   
 $\Delta y=1$

### Cooccurrence-Matrix