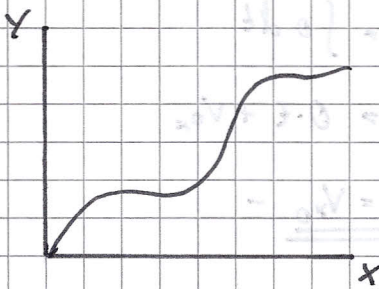


Ermittlung der Bahnkurve

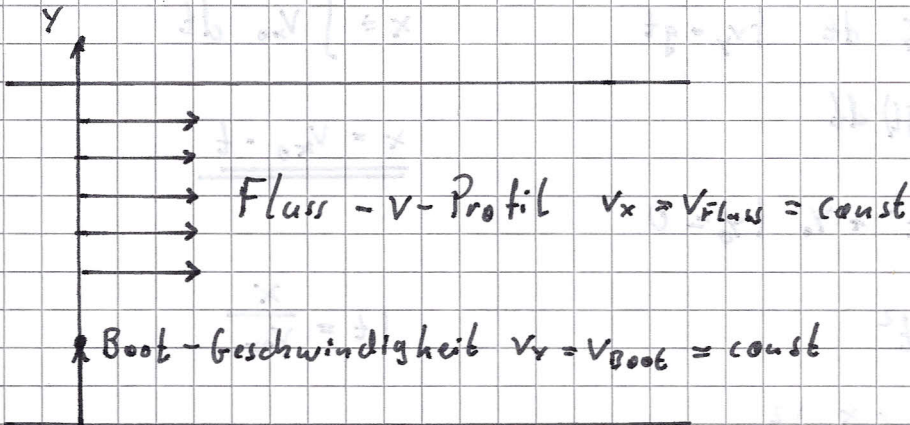
$x(y)$ oder $y(x)$ in der Ebene aus dem Weg-Zeit-Gesetzen $x(t)$ und $y(t)$.



$$x(t) = A + Dt$$

$$y(t) = C + D \cdot t$$

$$y = C + D \left(\frac{x - A}{D} \right)$$



X	$v_x = v_{\text{Fluss}} = v_F$	$v_x = \frac{dx}{dt}$	$x = \int v_x dt = v_F \cdot t + x_0$
Y	$v_y = v_{\text{Boote}} = v_D$	$v_y = \frac{dy}{dt}$	$y = \int v_y dt = v_D \cdot t + y_0$

$$y(x) = \frac{v_D}{v_F} \cdot x$$