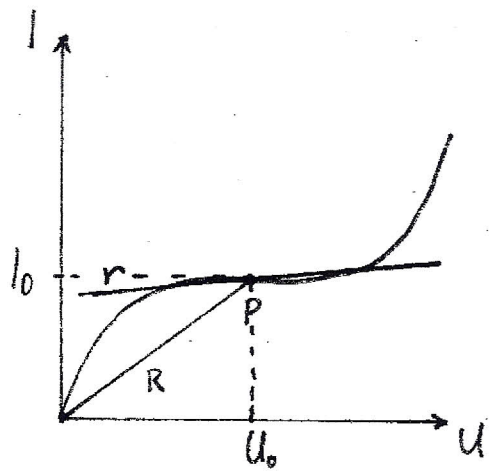


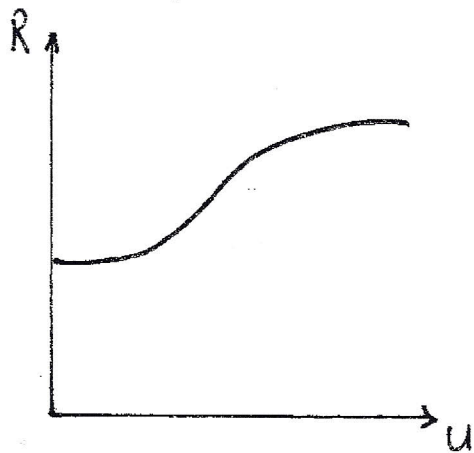
nichtlineare Widerstände:



$$\vartheta = \text{const}$$

$$R = U_0 / I_0 \rightarrow \text{Gleichstromwiderstand}$$

$$r = dU_0 / dI_0 \rightarrow \text{differentieller Widerstand}$$



$$-\infty < r < \infty$$

Beispiel für Kaltleiter