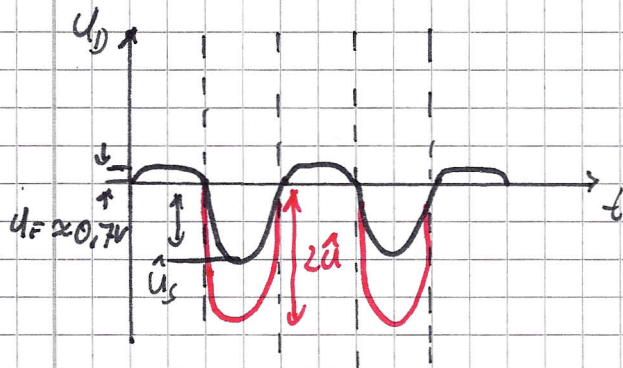


Wichtige Parameter

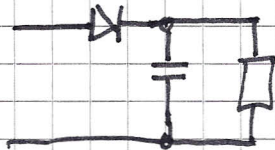
I_{FRM} - forward repetitive maximum
 - Maximaler periodischer Spitzenstrom



U_{FRM} - maximale Spannung in Sperrrichtung

Beispiel:

$$U_n = 230V_{eff}$$



Spannung an C:

$$U_c \leq \hat{U}_n = 230 \cdot \sqrt{2}$$

$$U_c \leq 325V$$

Nennspannung

$$U_n = 450V$$

Sicherheit 30%



Spannung über D

$$U_D \leq 2 \hat{U}_n$$

$$U_D \leq 650V$$

Sicherheit 10.. 30% $\rightarrow U_{FRM} = 800V$